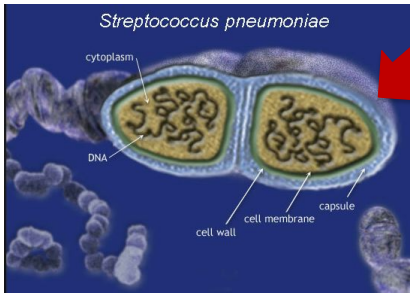
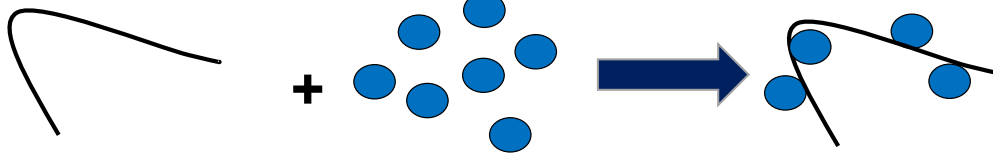


Capsular Polysaccharide



Conjugate Vaccines

Covalent linkage of protein to carbohydrate converts a T independent antigen into a T dependent antigen



Polysaccharide Antigen

“Carrier” Protein

Conjugate

- No affinity maturation
- No memory response
- No class switching
- Poorly immunogenic in infants

- Affinity maturation
- Memory response
- Class switching
- Immunogenic in infants

Conjugate Vaccines

Other vaccines where the antigen needs to be linked to a carrier protein to be suitably immunogenic

